

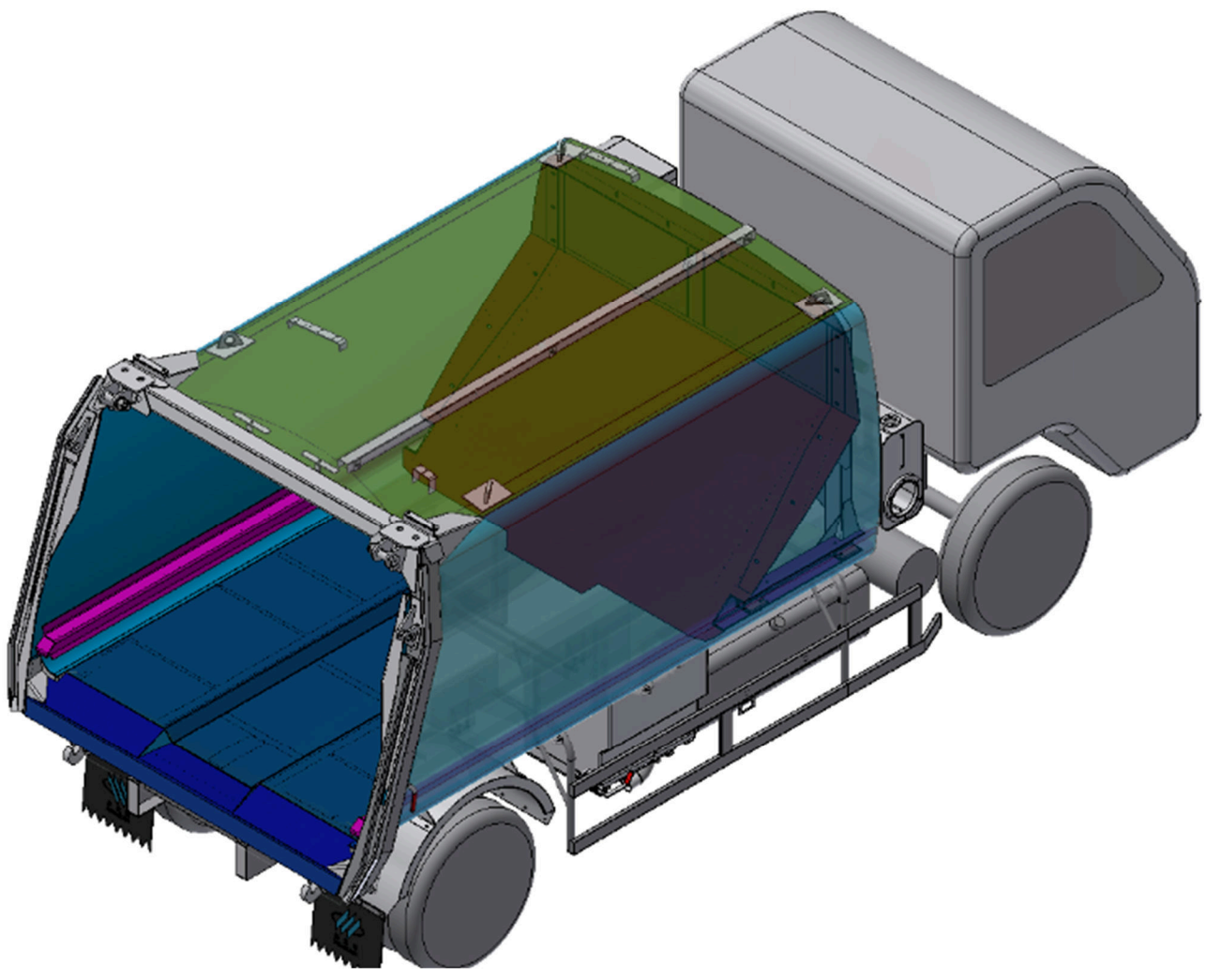
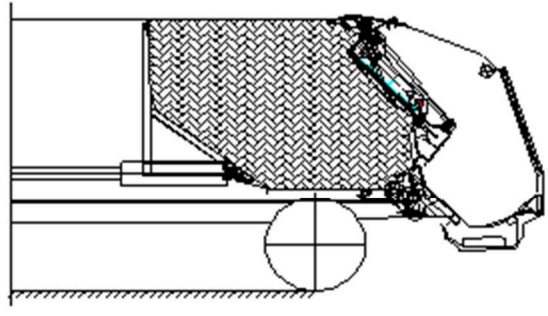
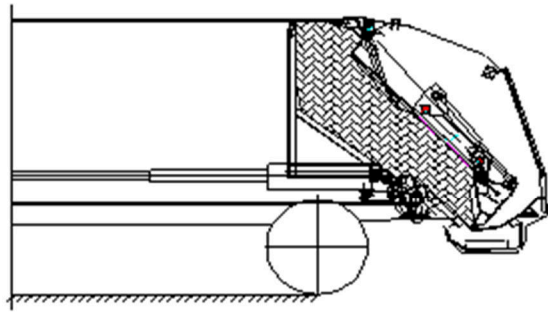
# COMPRESSION REFUSE COLLECTOR









## Main Parameters

Items		FLM5080ZYSDF6NG	FLM5180ZYSDF6KNG	FLM5250ZYSDF6NG	
GVW	kg	8200	18000	25000	
Payload Weight	kg	705	7115	9005	
Wheelbase	mm	4200	4500	4350+1350	
Upper Weight	kg	3200	4490	6800	
Selectable Of Chassis Brand		DONGFENG	DONGFENG	DONGFENG	
Refuse Container Capacity	m <sup>3</sup>	6.5	12.5	20	
Upper Transportation Dimensions	Garbage Box	mm	3965×2200×1950	5015×2500×2210	5700×2530×2690
	Hopper	mm	2580×2200×1550	3660×2500×1730	3700×2530×2000
Hopper Volume	m <sup>3</sup>	0.66	1.1	1.3	
Hopper Opening Width	mm	1565	1870	1960	
Hopper Bottom Above Floor (Unladen)	mm	≤1080	≤1280	≤1280	
Waste Water Tank	L	510	670	700	
Garbage Compression Density	t/m <sup>3</sup>	0.65-0.8	0.65-0.8	0.65-0.8	
Hydraulic System Working Pressure	MPa	18	21	21	
Loading Recycle Time	s	≤13	≤17	≤25	
Lifting Recycle Time	s	≤10	≤11	≤11	
Discharging Time	s	≤40	≤55	≤83	
Max Shirking Force	kN	156	187	248	
Max Crush Compressing Force	kN	112	162	186	
Power Type		LNG	LNG	LNG	
Compression Frame		Bi-directional Compression	Bi-directional Compression	Bi-directional Compression	

# Technical Specification



-  Left board & right board & front of base plate
-  Top plate
-  Guide rail
-  Push plate
-  Rear base plate
-  Push plate slide groove

# Base Specification

## Body:

- The U-shaped truss slot with high strength and Japanese technology is used as the movable guide rail of garbage pushing plate, which has strong compression capacity and good deformation resistance.
- The dustbin and other main components are made of high-strength weathering steel plate, and arc-shaped design is adopted, which is simple and beautiful, with large effective volume, outstanding overall structural performance and strong impact resistance.
- The sliding block of push plate is made of high wear-resistant alloy material with long service life.

## Control system:

- The intelligent control system of controller is adopted, which can be controlled centrally in the cab. With automatic and manual double control mode, it can control the garbage truck operation in the cab, the middle of the vehicle, the rear of the vehicle, etc., which is convenient and efficient.

## Hydraulic system:

- The back door opening and closing hydraulic system with good sealing and high safety is adopted at the joint of stuffing device and box body, which is an adjustable hydraulic locking full sealing technology.
- Equipped with two-way compression function, high compression efficiency and large garbage load. When unloading, when the filler is lifted in place, the scraper and sliding plate automatically realize a cycle to clean up the garbage left in the filler.

## Other advantages:

- Equipped with a large capacity sewage tank and combined with a diversion sewage collection device, the sewage leakage between the filler and the garbage box due to the failure of the sealing strip can be drained into a special sewage collection box, and a flexible and reliable sewage tank cleaning door sealing device is installed to effectively prevent secondary pollution caused by sewage leakage.
- It is equipped with many safety protection measures, such as slider up, scraper up button, emergency stop button, interlock switch to prevent the stuffer from falling, safety strut, self-locking function of the lifter cylinder of the stuffer, to ensure the safety of personnel.
- Equipped with night work lights, convenient for sanitation workers to work at night.

## LNG:

- The chassis engine adopts YUCHAI natural gas engine, which is the national VI emission. Natural gas vehicles are clean energy vehicles with the following advantages:
  - Economy: each LNG truck saves about 20% - 30% of the cost compared with the diesel truck in the same horsepower section, no carbon deposition, no oil dilution, no need to change the oil frequently, reduce the maintenance times, reduce the maintenance cost, extend the service life of the engine, and reduce the abnormal loss.
  - Environmental protection: the content of methane in LNG is more than 90%, the sulfur removal is more thorough, and the emission is easy to reach the standard.
  - Safety: low temperature (-162 °C), low pressure (below 0.62 MPa), high ignition point (623 °C).
  - Good driving comfort: the octane number of LNG is higher than the 97# gasoline on the market, with good antiknock performance, low noise and smooth operation.

## Optional device:

- According to the user's demand, it is equipped with various kinds of garbage truck bucket devices. The lifting support device which is convenient for installation and long service life, and the cam clamping device which has high efficiency and wide application are carefully designed to effectively eliminate the risk of barrel dropping in the feeding process, which provides the possibility to configure a variety of lifting devices.
- Optional pressure switch of scraper and sliding plate.
- FLM5080ZYSD6NG:
  1. Choose domestic filler chute with roller.
  2. Stainless steel sewage tank (one on the left and one on the left).
  3. Select the rear cover plate of the electric hydraulic cylinder to open and close the filler (need to add the valve group control).
- FLM5180ZYSD6KNG:
  1. Select German chute with slider.
  2. Stainless steel sewage tank (one on the right).
  3. Optional aluminum alloy side guardrail.
- FLM5250ZYSD6NG:
  1. The domestic chute of the optional filler is equipped with wear-resistant slider or roller.
  2. The German chute of the optional filler is equipped with wear-resistant slider.
  3. Optional stainless steel waste water tank (one on the right).
  4. Optional aluminum alloy side guardrail.
  5. Increase of filling force.
  6. Pneumatic control of sewage tank.